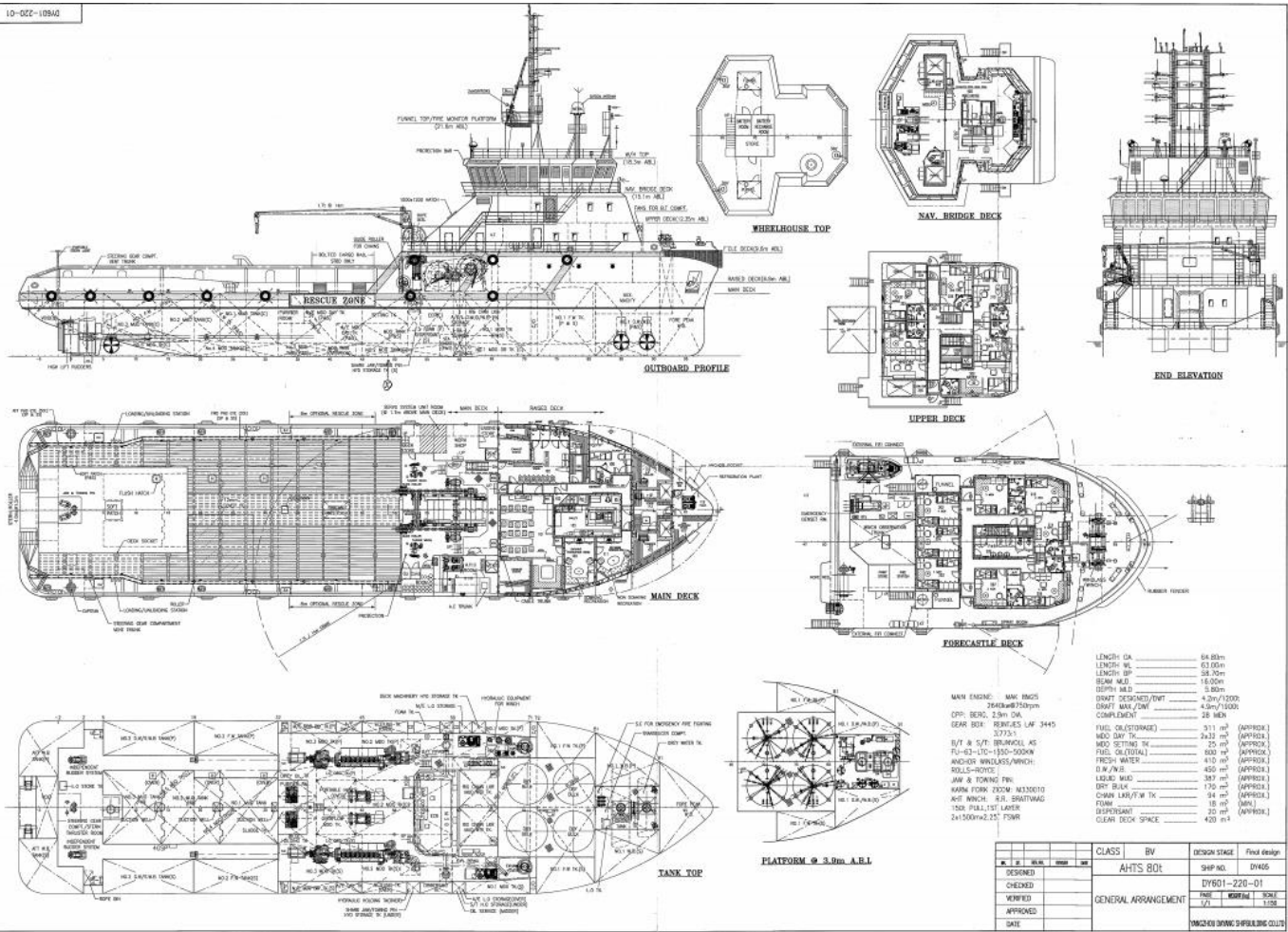


AHTS - OLYMPIC Z

Vessel Specifications



10-002-10942



GENERAL

Vessel Name	OLYMPIC Z
Year Built	2007
Builder	Yangzhou Dayang Shipbuilding - China
Classification	BV
Class Notation	I + Hull, + Mach, Tug, Supply Vessel, Fire Fighting Ship I Water spray, Unrestricted navigation, + AUT-UMS + DYNAPOS-AM/ATR (Class 2),
Design	CW80T
Official No.	52276-PEXT
Call Sign	3EOW9
IMO Number	9351206
Flag	Panama
Port of Registry	Panama City

MACHINERY

Main Engines	2 X MAK, Total 7200 BHP/5280 kW
Propellers	2 CPP, dia: 2,900 mm in Kort Nozzles
Rudders	2 x Ulstein High Lift Flap type
Bow Thruster	2 x 500 kW tunnel, electrically driven CPP
Stern Thruster	1 x 500 kW tunnel, electrically driven CPP
Shaft Generators	2 x 1600 kVA @ 1800 rpm, 2x 450V 60 Hz
Aux. Generators	2 x 440 kVA @ 1800 rpm, 2x 450V 60 Hz
Emergency Generators	1 x 110 kVA @ 1800 rpm, 1x 450V 60 Hz

CAPACITIES & PUMP RATES

Cargo Deck Area	420 m ² (33x13m)
Deck Cargo	5.0 t/m ² , 800 tons @ 0.9 m above deck
Fuel Oil	600 m ³ – 1x120 m ³ /h at 7 bars
Fresh Water	445 m ³ – 1x 120 m ³ /h at 7 bars
Drill/Ballast Water	464 m ³ – 1x120 m ³ /h at 7 bars
Liquid Mud/Brine	392 m ³ – 1x 120 m ³ /h at 7 bars
	Liquid mud tank are designed for products up to 2.5 sg and are equipped with agitators and circulation
Chain locker/Brine/Mud	112 m ³
Bulk Cement	170 m ³ – 4 tanks-sg 2.35- 2 products 2 air compressors– 2x20m ³ /min at 5.6 bars
Dispersant	20 m ³
Foam	18 m ³

ACCOMODATION

Accommodation for 28 persons composed of fully air-con:
6x single cabins, 5x 2 men cabins, 3x 4 men cabins
1 office, 1 hospital, 2 mess/day rooms, laundry, galley
provision rooms, stores

DIMENSIONS

Length Overall	64.80 m
Breadth, moulded	16.00 m
Depth, moulded	5.80 m
Draft, designed	4.90 m
GT/NT	2014/604
DWT at max draft	1500 Tons
Bollard Pull	85 TBP

CONSUMPTIONS

At 100% MCR	23m ³ /day @ 14 kts
At 85% MCR	15m ³ /day @ 11 kts
At Economic Speed	12m ³ /day @ 9 kts
Type of Fuel	MGO

ANCHOR HANDLING / TOWING

Main Winch	1 electro-hydraulic low pressure winch composed of 2 declutchable drums in waterfall arrangement each equipped with: Dia. 900/2,090 mm x 1,800 mm length.
Drum Size	
Drum Capacity	1,500 m of 2¼" steel wire rope
Brake holding load	225 t on 1 st layer
Rated Pull	150 t on 1st layer at 0-8.4 m/min
Spooling device	Combined for both drums
Cable Lifters	2 of 3" and 2½"
Storage Wire Reel	1 electro-hydraulic unit with 1 drum Pull @ 1st layer: 12 t at 0-18 m/min Capacity: 1500 m of 2¼" wire, Size: 800/ D: 2200 mm L: 1500 mm
Shark Jaw	2 Sets of 250 SWL tns each.
Towing Pins	1 pair of vertical/retractable type, 250 t SWL
Stern Roller	1 X 250 mt SWL, L: 5000 mm D: 2700 mm
Tugger Winches	2x 11 t at 25m/min
Capstans	2x 10 t at 14m/min
Deck Crane	1.7 t at 14 m

ELECTRONICS/DYNAMIC POSITION SYSTEM

NAVIGATION

2 radars, 1 gyrocompass, 1 magnetic compass, 1 digital echo-sounder, 1 speed log, 1 GPS
1 autopilot system

COMMUNICATION

1 radio system compliant with GMDSS A3 rules including:
1 SSB duplex DSC, 2 INMARSAT C, 2 VHF, EPIRB, SART, NAVTEX, 1 Iridium system, 1 INMARSAT F
E-mail and on-board computer network system, Intercom system with facilities in each room

DYNAMIC POSITION SYSTEM

Comply with class notation DYNAPOS AM/ATR (class 2)

SPECIAL EQUIPMENT

FIFI Class 1

Water Monitors	2 x 1,200 m ³ /h at 12 bars (with foam capacity 300m ³ /h)
Pumps:	2 x 1,500 m ³ /h at 14 bars each with deluge system

