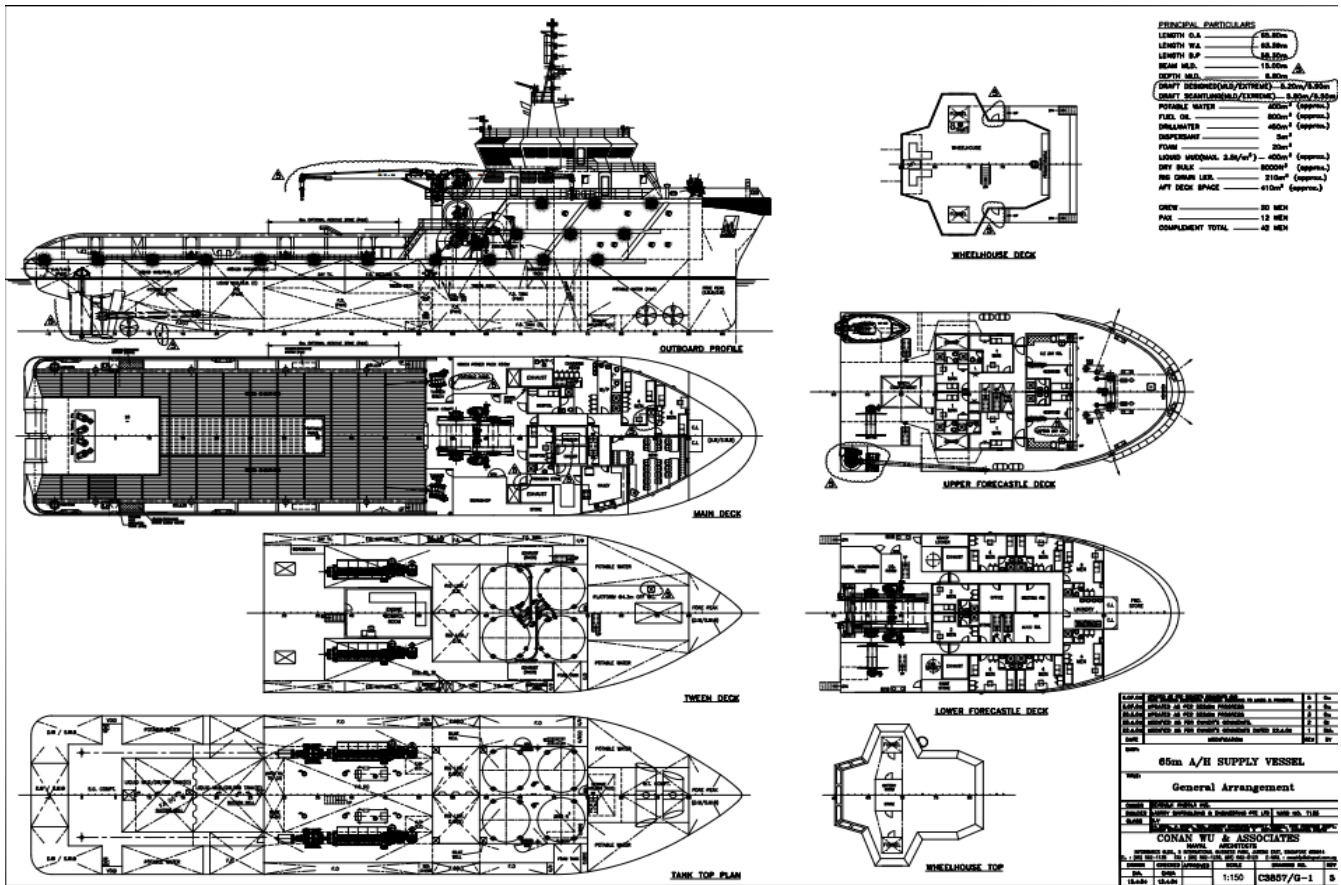


# AHTS - PANOS P

## Vessel Specifications



## GENERAL

Vessel Name	PANOS P
Year Built	2005
Builder	Labroy Shipbuilding - Singapore
Classification	NKK
Class Notation	Tug/Offshore Supply Vessel Fire Fighting Vessel-Type 1 / Class A DPS/MO
Design	CW65M
Official No.	52174-PEXT
Call Sign	3FZV2
IMO Number	9324227
Flag	Panama
Port of Registry	Panama City

## MACHINERY

Main Engines	2 X MAK 9M25, Total 8000 BHP/5940 kW
Propellers	2 CPP, dia: 3,300 mm in Kort Nozzles
Rudders	2 x Ulstein High Lift Flap type
Bow Thruster	2 x 680kW/910HP/9.8MT thrust, CPP
Stern Thruster	1 x 450kW/603HP/6.5MT thrust, CPP
Shaft Generators	2 x 1341 kVA @ 1500 rpm, 2x 450V 60 Hz
Aux. Generators	2 x 830 kVA @ 1800 rpm, 2x 450V 60 Hz
Emergency Generators	1 x 95 kVA @ 1800 rpm, 1x 450V 60 Hz

## CAPACITIES & PUMP RATES

Cargo Deck Area	410 m <sup>2</sup> (34x12m)
Deck Cargo	5.0 t/m <sup>2</sup> , 800 tons @ 0.9 m above deck
Fuel Oil	856 m <sup>3</sup> – 1x120 m <sup>3</sup> /h at 80 m
Fresh Water	400 m <sup>3</sup> – 1x 120 m <sup>3</sup> /h at 80 m
Drill/Ballast Water	590 m <sup>3</sup> – 1x120 m <sup>3</sup> /h at 80 m
Liquid Mud/Brine	400 m <sup>3</sup> – 1x 100 m <sup>3</sup> /h at 75 m

Liquid mud tank are designed for products up to 2.2 sg

and are equipped with agitators and circulation

Bulk Cement	226 m <sup>3</sup> – 4 tanks-sg 2.35- 2 products
Dispersant	4.3 m <sup>3</sup>
Foam	37 m <sup>3</sup>
Chain Lockers	200 m <sup>3</sup>

## ACCOMODATION

Accommodation for 42 persons composed of fully air-con:

6x single cabins, 2x 2 men cabins, 8x 4 men cabins

1 office, 1 hospital, 2 mess/day rooms, laundry, galley

provision rooms, stores

## DIMENSIONS

Length Overall	65.80 m
Breadth, moulded	15.00 m
Depth, moulded	6.80 m
Draft, designed	5.80 m
GT/NT	2063/619
DWT at max draft	1886 Tons
Bollard Pull	95 TBP

## CONSUMPTIONS

At 100% MCR	23m <sup>3</sup> /day @ 14 kts
At 85% MCR	15m <sup>3</sup> /day @ 11 kts
At Economic Speed	12m <sup>3</sup> /day @ 9 kts
Type of Fuel	MGO

## ANCHOR HANDLING / TOWING

Main Winch	1 electro-hydraulic low pressure winch composed of 2 declutchable drums in waterfall arrangement each equipped with: Dia. 900/2,090 mm x 1,800 mm length.
Drum Size	
Drum Capacity	1,500 m of 76mm steel wire rope
Brake holding load	450 t on 1 st layer
Rated Pull	300 t on 1st layer at 0-8.4 m/min
Spooling device	2 x 1500 m x 76 mm diam, 8 t line pull
Cable Lifters	2 of 3" and 2½"
Storage Wire Reel	1 electro-hydraulic unit with 1 drum Pull @ 1st layer: 12 t at 0-18 m/min Capacity: 1500 m of 76 wire, Size: 800/ D: 2200 mm L: 1500 mm
Shark Jaw	2 Sets of 500 SWL tns each.
Towing Pins	1 pair of vertical/retractable type, 500 t SWL
Stern Roller	1 X 400 mt SWL, L: 5000 mm D: 2000 mm
Tugger Winches	2x 15 t at 10m/min
Capstans	2x 10 t at 15m/min
Deck Crane	3 t @ 21 m / 8 t @ 17 m

## ELECTRONICS/DYNAMIC POSITION SYSTEM

### NAVIGATION

2 radars, 1 gyrocompass, 1 magnetic compass, 1 digital echo-sounder, 1 speed log, 1 GPS  
1 autopilot system

### COMMUNICATION

1 radio system compliant with GMDSS A3 rules including:  
1 SSB duplex DSC, 2 INMARSAT C, 2 VHF, EPIRB, SART, NAVTEX, 1 Iridium system, 1 INMARSAT F  
E-mail and on-board computer network system, Intercom system with facilities in each room

### DYNAMIC POSITION SYSTEM

Comply with class notation DYNAPOS AM/ATR (class 1)

## SPECIAL EQUIPMENT

### FIFI Class 1

Water Monitors	2 x 1,200 m <sup>3</sup> /h at 12 bars
Pumps:	2 x 1,500 m <sup>3</sup> /h at 14 bars

