

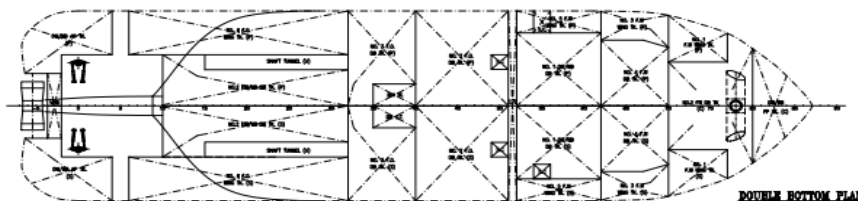
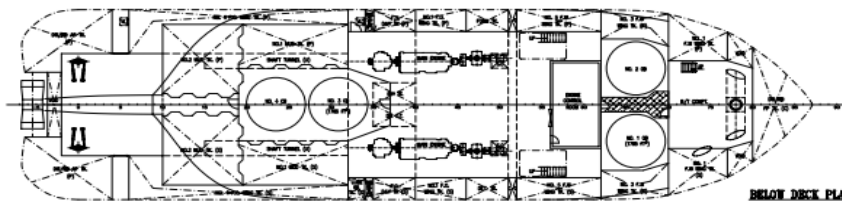
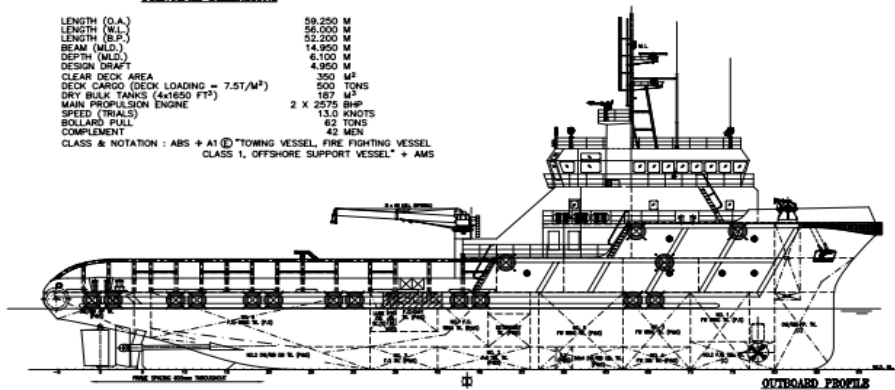
## Vessel Specifications



### PRINCIPAL DIMENSIONS

LENGTH (O.A.)	59.250 M
LENGTH (W.L.)	56.000 M
LENGTH (B.P.)	52.200 M
BEAM (M.L.D.)	14.950 M
DEPTH (M.L.D.)	6.100 M
DESIGN DRAFT	4.950 M
CLEAR DECK AREA	350 M <sup>2</sup>
DECK CARGO (DECK LOADING = 7.5T/M <sup>2</sup> )	500 TONS
DRY BULK TANKS (4x1650 FT <sup>3</sup> )	187 M <sup>3</sup>
MAIN PROPULSION ENGINE	2 X 2275 BHP
SPEED (TRIALS)	13.0 KNOTS
BOLLARD PULL	62 TONS
COMPLEMENT	42 MEN

CLASS & NOTATION : ABS + A1 Ⓢ TOWING VESSEL, FIRE FIGHTING VESSEL  
CLASS 1, OFFSHORE SUPPORT VESSEL\* + AMS



## GENERAL

<b>Vessel Name</b>	STRATIS Z
<b>Year Built</b>	2007
<b>Builder</b>	Fujian Southeast Shipbuilding - China
<b>Classification</b>	LR
<b>Class Notation</b>	LR, +100 A1, AHTS, Towing Vessel, Fire Fighting Ship 1, +LMC
<b>Design</b>	KCM 59M AHTS
<b>Official No.</b>	49151-17
<b>Call Sign</b>	3FIO4
<b>IMO Number</b>	9425576
<b>Flag</b>	Panama
<b>Port of Registry</b>	Panama City

## MACHINERY

<b>Main Engines</b>	2 X MAK, Total 5150 BHP/3840 kW
<b>Propellers</b>	2 BERG CPP in Kort Nozzles. D:2650mm
<b>Rudders</b>	2 x Ulstein High Lift Flap type
<b>Bow Thruster</b>	1 x 315 kW tunnel, electrically driven CPP
<b>Aux. Generators</b>	3 x 315 kVA @ 1500 rpm, 3x 415V 50 Hz
<b>Emergency Generators</b>	1 x 52 kVA @ 1500 rpm, 1x 415V 50 Hz

## CAPACITIES & PUMP RATES

<b>Cargo Deck Area</b>	340 m <sup>2</sup> (28x12m)
<b>Deck Cargo</b>	5.0 t/m <sup>2</sup> , 800 tons @ 0.9 m above deck
<b>Fuel Oil</b>	537 m <sup>3</sup> – 1x150 m <sup>3</sup> /h at 75m
<b>Fresh Water</b>	360 m <sup>3</sup> – 1x 100 m <sup>3</sup> /h at 75m
<b>Drill/Ballast Water</b>	400 m <sup>3</sup> – 1x100 m <sup>3</sup> /h at 75m
<b>Liquid Mud/Brine</b>	370 m <sup>3</sup> – 1x 75 m <sup>3</sup> /h at 75m

Liquid mud tank are designed for products up to 2.5 sg

and are equipped with agitators and circulation

<b>Bulk Cement</b>	187 m <sup>3</sup> , 4 tanks, SG 1.35
	2 air compressors– 2x13m <sup>3</sup> /min at 5.6 bars
<b>Dispersant</b>	14 m <sup>3</sup>
<b>Foam</b>	14 m <sup>3</sup>

## ACCOMODATION

Accommodation for 42 persons composed of fully air-con:

4x single cabins, 3x 2 men cabins, 8x 4 men cabins

1 office, 1 hospital, 2 mess/day rooms, laundry, galley

provision rooms, stores

## DIMENSIONS

<b>Length Overall</b>	59.25 m
<b>Breadth, moulded</b>	14.95 m
<b>Depth, moulded</b>	6.10 m
<b>Draft, designed</b>	4.95 m
<b>GT/NT</b>	1678/503
<b>DWT at max draft</b>	1385 Tons
<b>Bollard Pull</b>	65 TBP

## CONSUMPTIONS

<b>At 100% MCR</b>	11 m <sup>3</sup> /day @ 12 kts
<b>At 85% MCR</b>	10 m <sup>3</sup> /day @ 10 kts
<b>At Economic Speed</b>	8 m <sup>3</sup> /day @ 9 kts
<b>Type of Fuel</b>	MGO

## ANCHOR HANDLING / TOWING

<b>Main Winch</b>	1 Karmoy hydraulic low pressure winch composed of 2 declutchable drums in waterfall arrangement each equipped with:
<b>Drum Size</b>	Dia. 900/2,090 mm x 1,800 mm length.
<b>Drum Capacity</b>	1,000 m of 52mm steel wire rope
<b>Brake holding load</b>	200 t on 1 st layer
<b>Rated Pull</b>	150 t on 1st layer at 0-8.4 m/min
<b>Spooling device</b>	Combined for both drums
<b>Storage Wire Reel</b>	1 hydraulic unit with 1 drum Pull @ 1st layer: 12 t at 0-18 m/min

Capacity: 1000 m of 52mm wire

<b>Shark Jaw</b>	2 Sets of 200 SWL tns each.
<b>Towing Pins</b>	1 pair of vertical/retractable type, 200 t SWL
<b>Stern Roller</b>	1 X 200 mt SWL, L: 4000 mm D: 1600 mm
<b>Tugger Winches</b>	2x 10 t at 25m/min
<b>Capstans</b>	2x 10 t at 14m/min
<b>Deck Crane</b>	3 t at 9 m

## ELECTRONICS

### NAVIGATION

2 radars, 1 gyrocompass, 1 magnetic compass, 1 digital echo-sounder, 1 speed log, 1 GPS

1 autopilot system, ECDIS 4000

### COMMUNICATION

1 radio system compliant with GMDSS A3 rules including:

1 SSB duplex DSC, 2 INMARSAT C, 2 VHF, EPIRB, SART, NAVTEX, 1 Iridium system, 1 INMARSAT F

E-mail and on-board computer network system, Intercom system with facilities in each room

## SPECIAL EQUIPMENT

### FIFI Class 1

Water Monitors: 2 x 1,200 m<sup>3</sup>/h at 12 bars (with foam capacity 300m<sup>3</sup>/h)

Pumps: 2 x 1,400 m<sup>3</sup>/h at 14 bars each with deluge system

Water Maker: 1 x 3t/day

